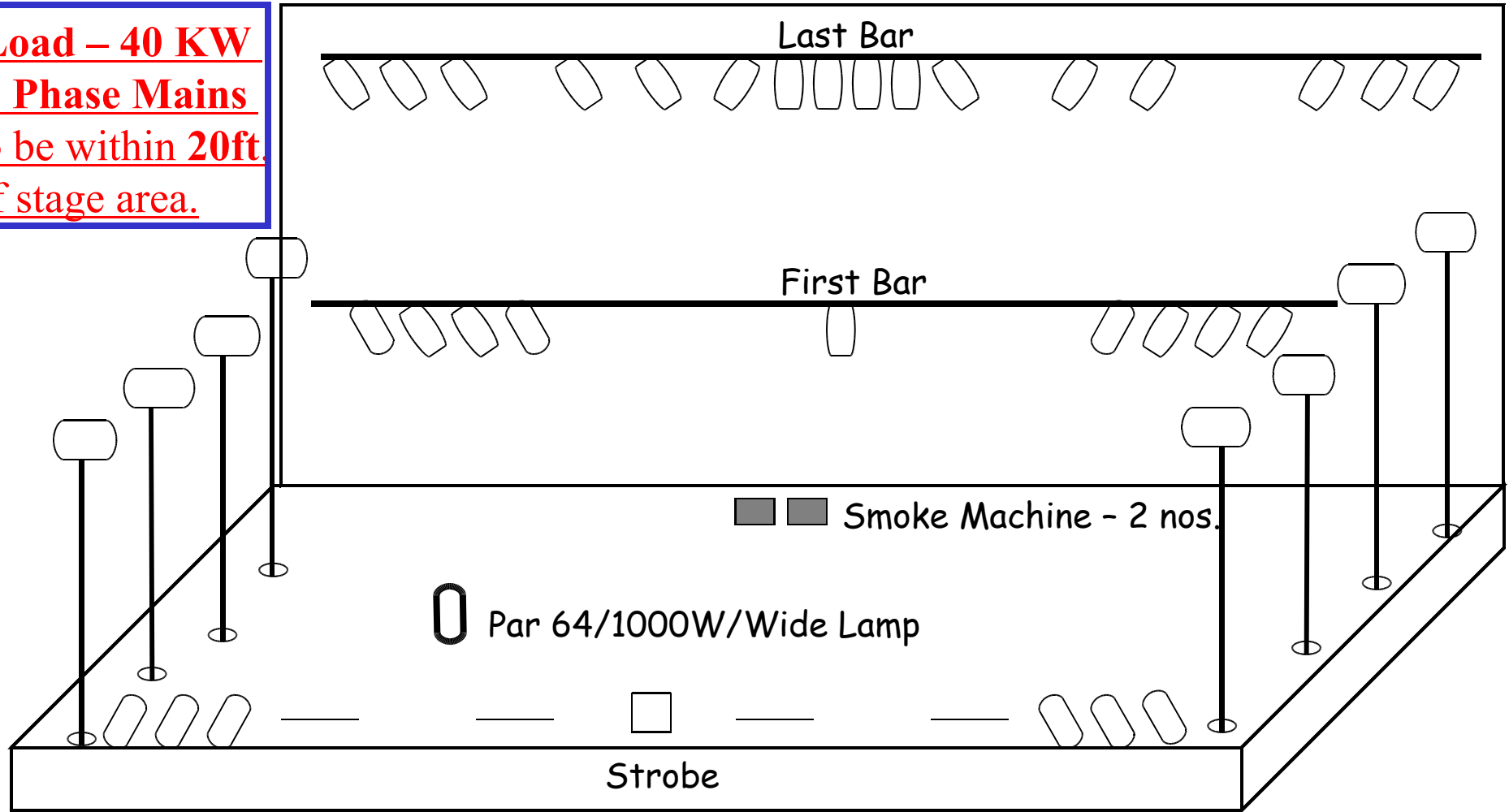


MAMATA SHANKAR DANCE COMPANY

Lighting Layout

Load – 40 KW
3 Phase Mains
to be within 20ft
of stage area.



DETAILS:

Par 64 (Wide) 1000W - 39 nos.

24 Channel Electronic Dimmer Board

Light Stands - 10 nos.

U.V. Tubes 2' - 4 nos.

Strobe Light - 1 nos.

Smoke - 2 nos.